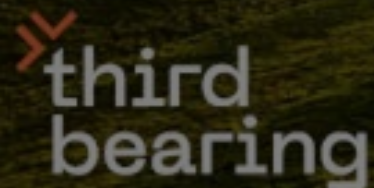


May 2025

# Colyton Community Plan

Colyton Community Committee





Photos from book 'A township like ours'



# A safe, connected, and vibrant rural village that embraces its heritage.

## Safe

Ensure safe movement for everyone, especially our children.

## Connected

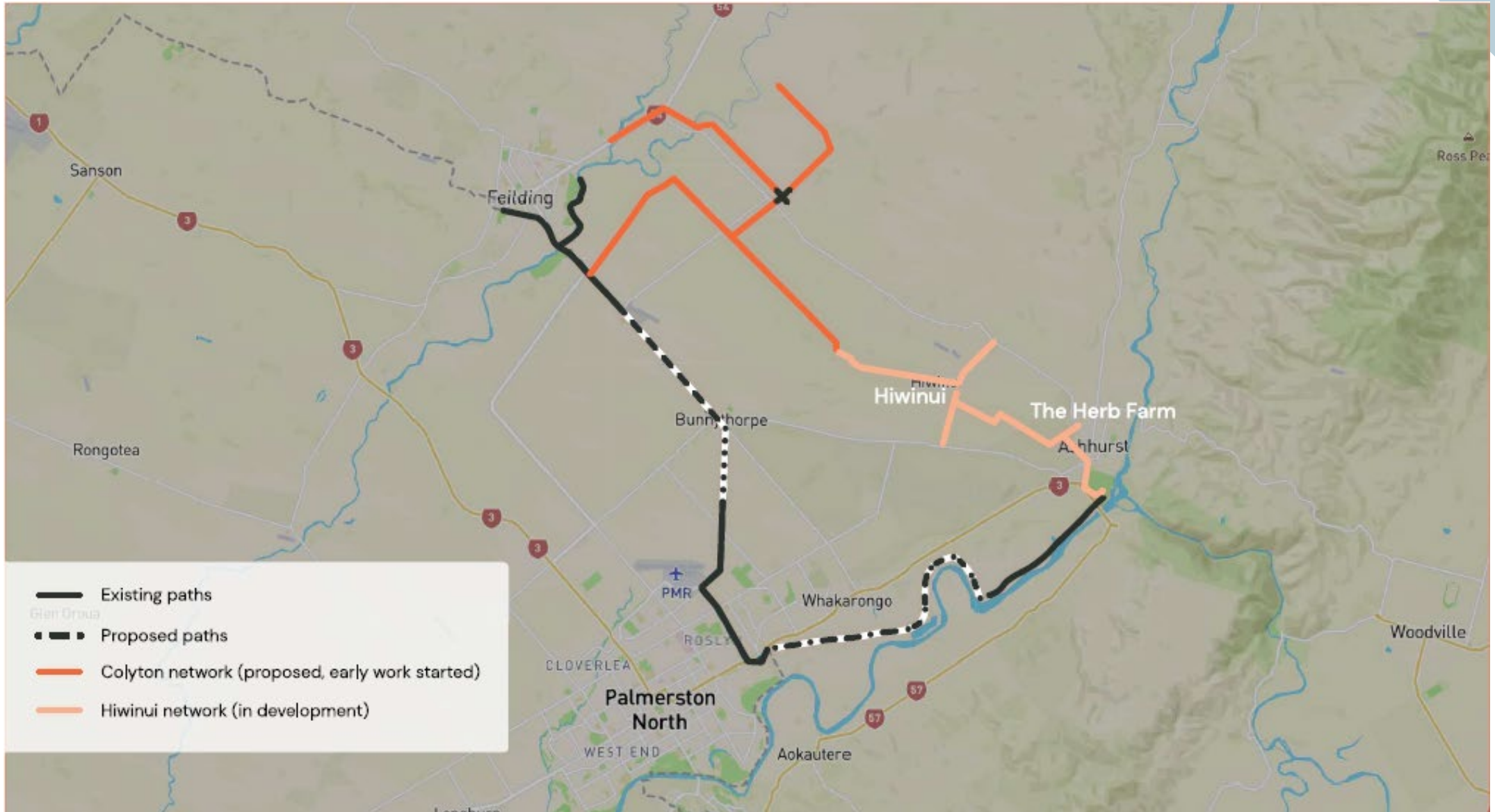
Foster strong community connections and shared identity by enhancing local spaces and supporting community life.

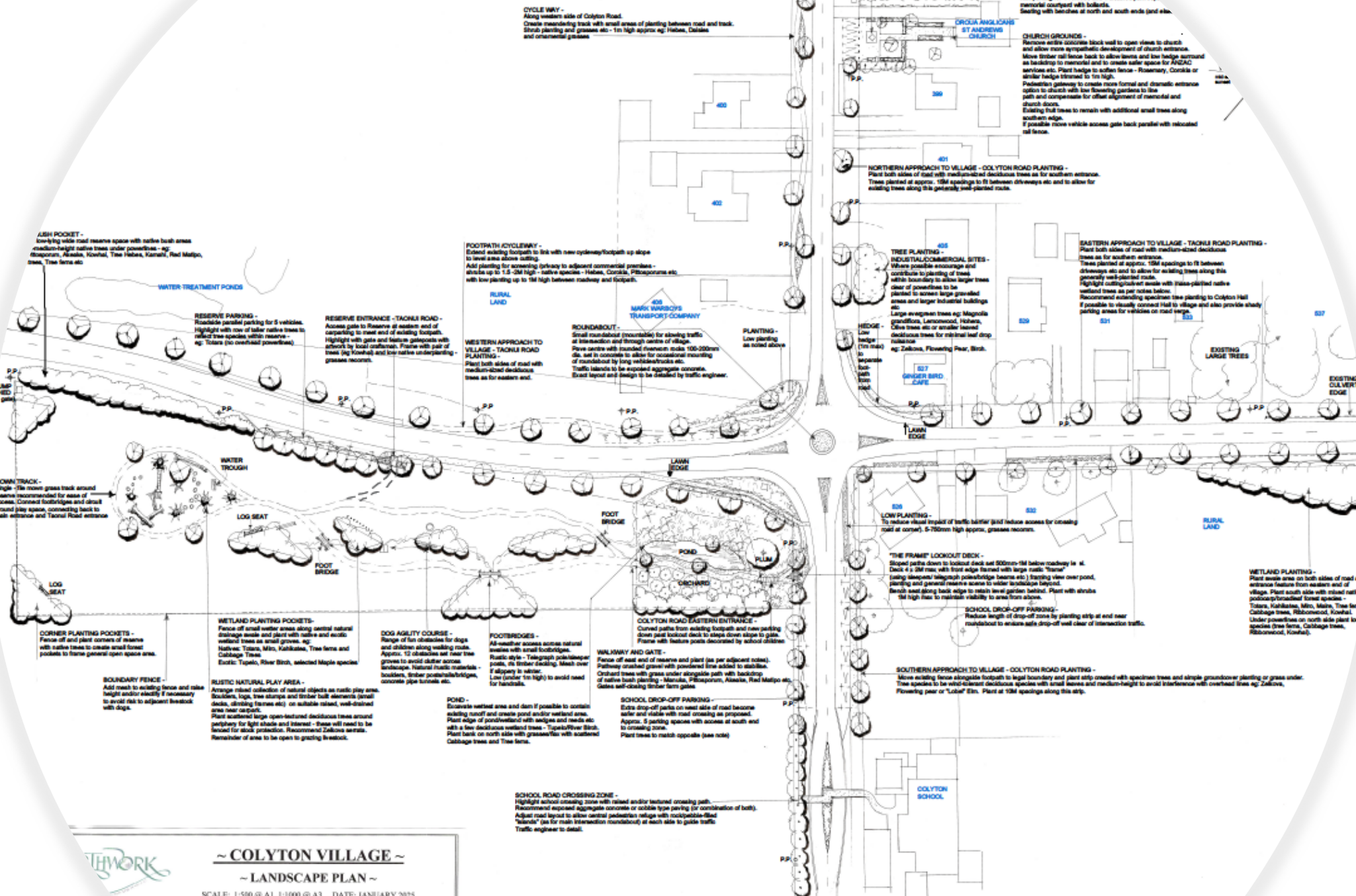
## Growth

Support thoughtful development that balances infrastructure and character, and grows Colyton as a vibrant local destination.

A green rectangular sign with the word "Colyton" in white, mounted on a white post in a grassy area next to a road. The sign is the central focus, with the word "Colyton" written in a bold, sans-serif font. The background shows a paved road, utility poles, and trees under a clear sky. The entire image is framed by a white circular border on the left side.

Colyton





**ASH POCKET** - Low-lying wide road reserve space with native bush areas medium-height native trees under powerlines - eg. Kowhai, Kauri, Hoopla, Tree Hebe, Karami, Red Matipo, etc. Tree ferns etc.

**RESERVE ENTRANCE - TAKONI ROAD** - Access gate to Reserve at eastern end of existing footpath. Highlight with gate and fencing gaps with artwork by local craftsman. Frame with pair of trees (eg Kowhai) and low native underplanting grasses etc.

**RESERVE PARKING** - Roadside parallel parking for 5 vehicles. Highlight with row of taller native trees to reflect tree spaces within reserve - eg. Totara (no overhead powerlines).

**MOUND TRACK** - Single 15m mown grass track around reserve recommended for ease of access. Connect footbridges and direct around lawn space connecting back to main entrance and Takoni Road entrance.

**CORNER PLANTING POCKETS** - Fence off and plant corners of reserve with native trees to create small forest pockets to frame general open space area.

**BOUNDARY FENCE** - Add needs to existing fence and raise height and/or slatify if necessary to avoid risk to adjacent footpath with dogs.

**RUSTIC NATURAL PLAY AREA** - Arrange mixed collection of natural objects on rustic play area. Boulders, logs, tree stumps and timber built elements (small decks, climbing frames etc) on suitable natural, well-drained area near carpark.

**WETLAND PLANTING POCKETS** - Fence off small wetter areas along central natural drainage swale and plant with native and exotic wetland trees as small groves, eg. Natives: Totara, Miro, Kahikatea, Tree ferns and Callagras Trees. Exotic: Tupelo, River Birch, selected Maple species.

**DOG AGILITY COURSE** - Range of fun obstacles for dogs and children along walking route. Approx. 12 obstacles set near tree grove to avoid clutter across landscape. Natural rustic materials - boulders, timber posts/birdtraps, concrete pipe tunnels etc.

**FOOTBRIDGES** - All-weather access across natural swales with small footbridges. Rustic style - Telegraph poles/steepers poles, its timber decking. Mesh over if slippage to skid. Low (under 1m high) to avoid need for handrails.

**POND** - Excavate wetland area and dam if possible to contain existing runoff and create pond and/or wetland area. Plant edge of pond/field with hedger and reeds etc with a few deciduous wetland trees - Tupelo/River Birch. Plant bank on north side with grasses/ferns with scattered Callagras trees and Tree ferns.

**SCHOOL ROAD CROSSING ZONE** - Highlight school crossing zone with raised and/or textured crossing path. Recommend exposed aggregate concrete or cobble type paving (or combination of both). Adjust road layout to allow central pedestrian refuge with responsibility-free 'islands' (as for main intersection roundabout) at each side to guide traffic. Traffic engineer to detail.

**CYCLE WAY** - Along western side of Colyton Road. Create meandering track with small areas of planting between track and road. Shrub planting and grasses etc - 1m high approx eg. Hebe, Daisies and ornamental grasses.

**FOOTPATH/CYCLEWAY** - Extend existing footpath to link with new cycleway/footpath up slope to level area above sitting. Add planting for screening driveway to adjacent commercial premises - shrubs up to 1.5-2M high - native species - Hebe, Cornik, Pittosporum etc with low planting up to 1M high between roadway and footpath.

**WESTERN APPROACH TO VILLAGE - TAKONI ROAD PLANTING** - Plant both sides of road with medium-sized deciduous trees as for eastern end.

**ROUNDABOUT** - Small roundabout (provisional) for slowing traffic at intersection and through centre of village. Three centre with rounded concrete circles 100-200mm dia. set in concrete to allow for occasional mounting of roundabout by long wheel-trucks etc. Traffic islands to be exposed aggregate concrete. Exact layout and design to be detailed by traffic engineer.

**PLANTING** - Low planting as noted above.

**INDUSTRIAL/COMMERCIAL SITES** - Where possible encourage and contribute to planting of trees within boundary to allow larger trees clear of powerlines to be planted to screen large gravelled areas and larger industrial buildings etc. Large evergreen trees eg: Magnolia grandiflora, Liriodendron, Hebe, Olive trees etc or smaller leaved deciduous trees for minimal leaf drop pollution eg: Zakohe, Flowering Pear, Birch.

**EDGE - Low hedge (1m max) to delineate bus path from road.**

**EXISTING LARGE TREES** -

**EXISTING OLIVERT EDGE** -

**LOW PLANTING** - To reduce visual impact of traffic barrier grid reduce access for crossing road at corner. 5-750mm high approx, grasses etc.

**THE FRAME' LOOKOUT DECK** - Sloped path down to lookout deck set 200mm-1M below roadway is at Deck 4 x 2M max with front edge framed with large native 'tara' (using sleepers/telegraph poles/battens etc) framing view over pond, planting and general reserve scene to wider landscape beyond. Bench seat along back edge to retain level garden behind. Plant with shrubs 1M high to maintain visibility to area from above.

**SCHOOL DROP-OFF PARKING** - Reduce length of drop-off zone by planting strip at end near roundabout to ensure safe drop-off well clear of intersection traffic.

**SOUTHERN APPROACH TO VILLAGE - COLYTON ROAD PLANTING** - Move existing fence alongside footpath to legal boundary and plant strip created with specimen trees and simple groundcover planting or grass under. Tree species to be wind-tolerant deciduous species with small leaves and medium-height to avoid interference with overhead lines eg: Zakohe, Flowering Pear or 'Cobler' Elm. Plant at 15M spacings along the strip.

**WETLAND PLANTING** - Plant swale area on both sides of road as wetland feature from eastern end of village. Plant south side with mixed native podocarp/forstland forest species - Totara, Kahikatea, Miro, Maire, Tree ferns, Callagras trees, Ribwortwood, Kowhai. Under powerlines on north side plant low species (tree ferns, Callagras trees, Ribwortwood, Kowhai).

**CHURCH GROUNDS** - Remove existing concrete block wall to open views to church and allow more sympathetic development of church entrance. Move timber rail fence back to allow trees and low hedge around as backdrop to memorial and to create safer space for ANZAC services etc. Plant hedge to soften fence - Rosemary, Cornik or similar hedge shrubs to 1m high. Pedestrian gateway to create more formal and dramatic entrance option to church with low flowering gardens to line path and compensate for offset alignment of memorial and church door. Existing fruit trees to remain with additional small trees along southern edge. If possible move vehicle access gate back parallel with relocated rail fence.

**NORTHERN APPROACH TO VILLAGE - COLYTON ROAD PLANTING** - Plant both sides of road with medium-sized deciduous trees as for southern entrance. Trees planted at approx. 15M spacings to fit between driveways etc and to allow for existing trees along this generally well-landed route.

**EASTERN APPROACH TO VILLAGE - TAKONI ROAD PLANTING** - Plant both sides of road with medium-sized deciduous trees as for southern entrance. Trees planted at approx. 15M spacings to fit between driveways etc and to allow for existing trees along this generally well-landed route. Highlight contributions to planting to Colyton Hall if possible to visually connect Hall to village and also provide shady parking areas for vehicles on road verge.

**COLYTON SCHOOL** -

**COLYTON VILLAGE** -

**LANDSCAPE PLAN** -

SCALE: 1:500 @ A1, 1:1000 @ A3 DATE: JANUARY 2025  
 DESIGNED AND DRAWN BY: HIRIARA WILSON  
 FILE: 1/25 - 2376

